

Bio-security Webinar

22 March 2018



National Vegetable
Extension Network
NORTHERN TERRITORY



Hort
Innovation



National Vegetable
Extension Network

NORTHERN TERRITORY

Vegetable and melon crops in Top End NT. Total \$90M
Cucurbits worth approximately \$70M in 2015



Melons \$53M
\$5M



Cucumber \$8M



Bitter Melon \$5M



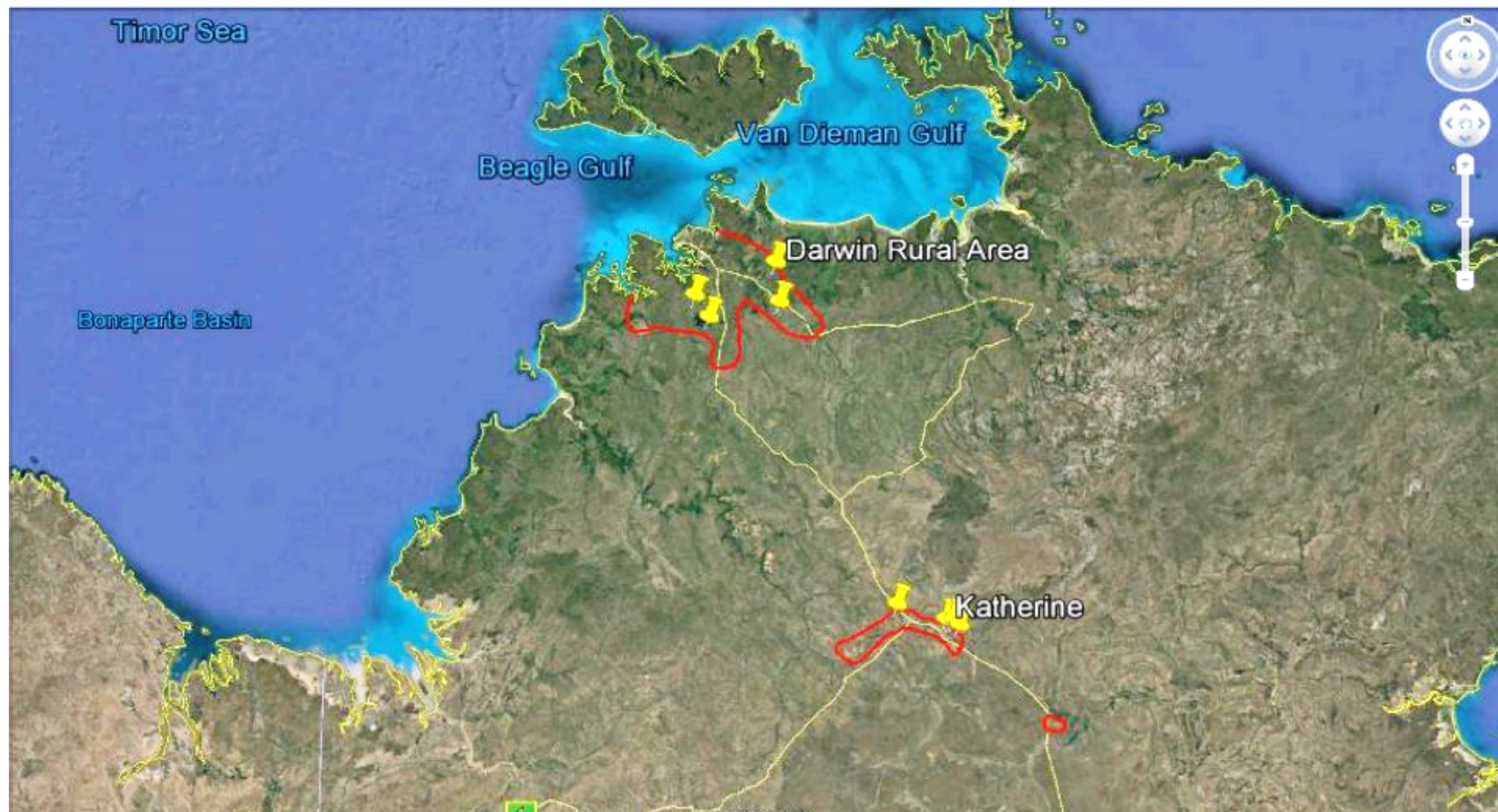
Asian Melons



National Vegetable
Extension Network

NORTHERN TERRITORY

CGMMV in the Top End NT 2014 -2015





NT Cucurbit Farmer Demographics

Melon (& Pumpkin) Growers

- Darwin x2
- Katherine x 7
- Mataranka x 2
- Ali Curung x 1
- Ti Tree x 1

Vegetable growers

- Darwin Rural x 150
- Katherine x 4
- Alice Springs x 3

Darwin veg growers
predominantly Vietnamese or
Cambodian background





National Vegetable Extension Network

NORTHERN TERRITORY

Initial CGMMV meetings with NTQ & Dr Aviv



2016 -2017

CGMMV Farm Bio-security Plan

NT FARMERS

Farm Biosecurity Plan Template for CGMMV and NT Cucurbit farms

Business name _____

Farm Address _____

Contact _____

Office _____

Mobile _____

Email _____

Completed by _____

Signed _____ Date _____

WARNING
FARM BIOSECURITY
IN PLACE

Please contact the office before entering.
Do not enter property without prior approval.
Keep to roadways and laneways.
Do not enter growing areas.

AUSVEG Horticulture Innovation Australia

This template is funded by Horticulture Innovation Australia using the National Vegetable Levy and funds from the Australian Government.

CGMMV Farm Bio-security Training



Weed Host Monitoring & Collecting Activities



Mock Audit CGMMV farm plan



CGMMV Corrective Action





National Vegetable Extension Network

NORTHERN TERRITORY

Major Risks	Actions	In place/ completed			Comment
		✓	X	N/A	
Signs and gates 	Biosecurity signs in place Gates shut and lockable Phone number on the sign Parking area signs in place				
Seeds and seedlings 	Certified or own "clean" seeds used Seedlings from registered nursery Seed and seedling register completed				
Staff 	Staff trained and record completed Clothes and equipment cleaned regularly Boots and secateurs used only on farm Footbath available (recipe is on the back of this page)				

The CGMMV On-farm checklist includes sections on

- Signs and gates
- Seeds and seedlings
- Staff
- Visitors
- Machinery
- Weeds
- Animals and birds
- Pests and Disease
- Deliveries and Pickups
- Waste
- Response to infection

And record sheets for

- Visitors
- Staff Training
- Machinery log

And a recipe for bleach solutions



National Vegetable Extension Network

NORTHERN TERRITORY

- National Management Plan in place
<http://ausveg.com.au/biosecurity/National%20CGMMV%20Management%20Plan%20V%202.0.pdf>
- No NT melon or veg farms positive in 2016 or 2017. Some weeds still positive
- Interstate market access without certificates but under NT legislation still need auditable on-farm biosecurity plans
- No restrictions on any farms
- VG15013 CGMMV R&D National project underway
- Still more to learn on:- seed testing, possible transmission by bees, diagnostics, soil half-life, etc
- Interaction with WA and Qld with incursions in those states including sharing resources



**Hort
Innovation**
Strategic levy investment

**VEGETABLE
FUND**

This project has been funded by Hort Innovation using the vegetable research and development levy and funds from the Australian Government. For more information on the fund and strategic levy investment visit horticulture.com.au